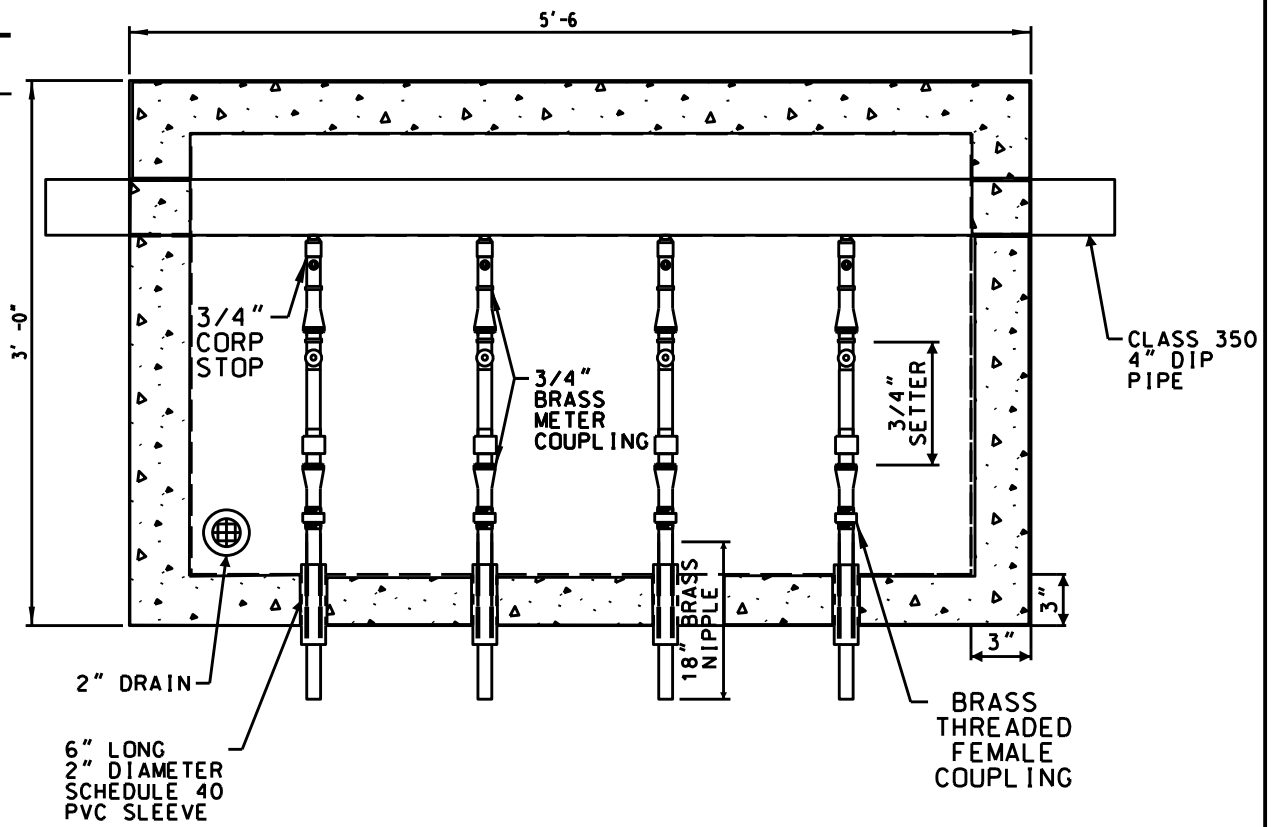
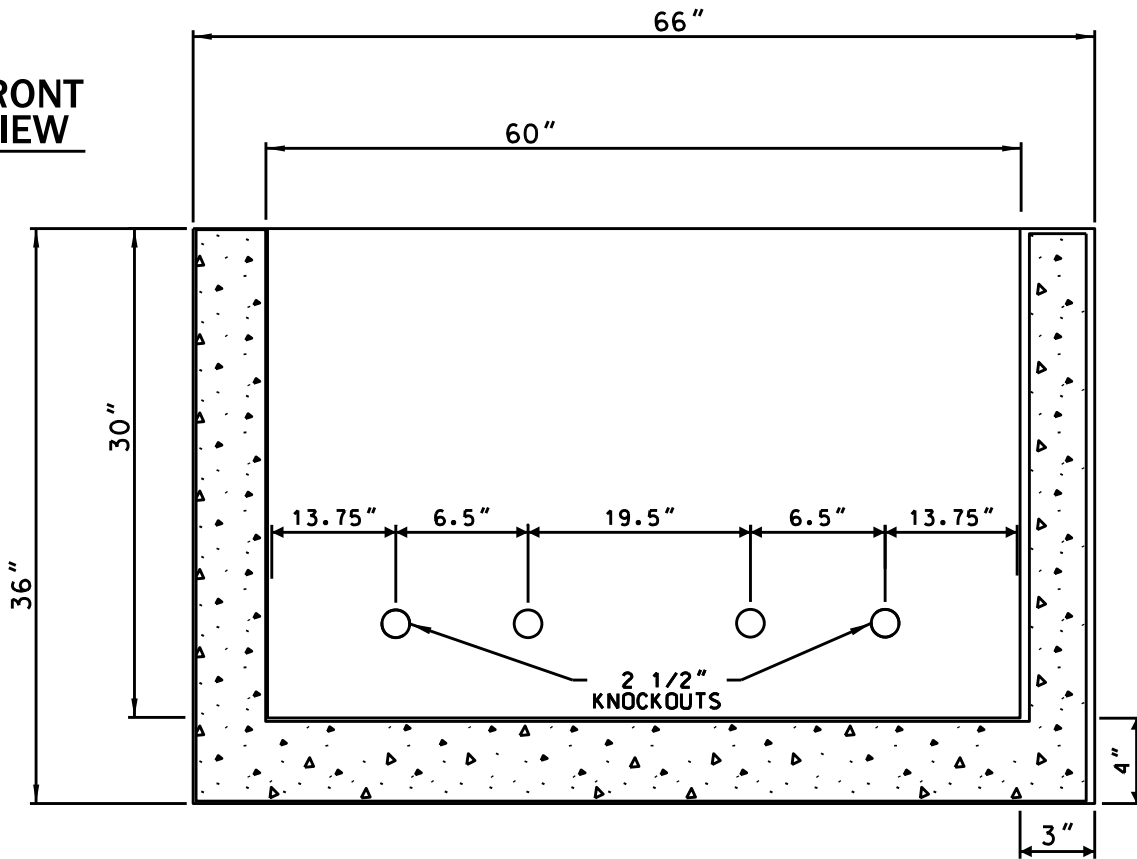


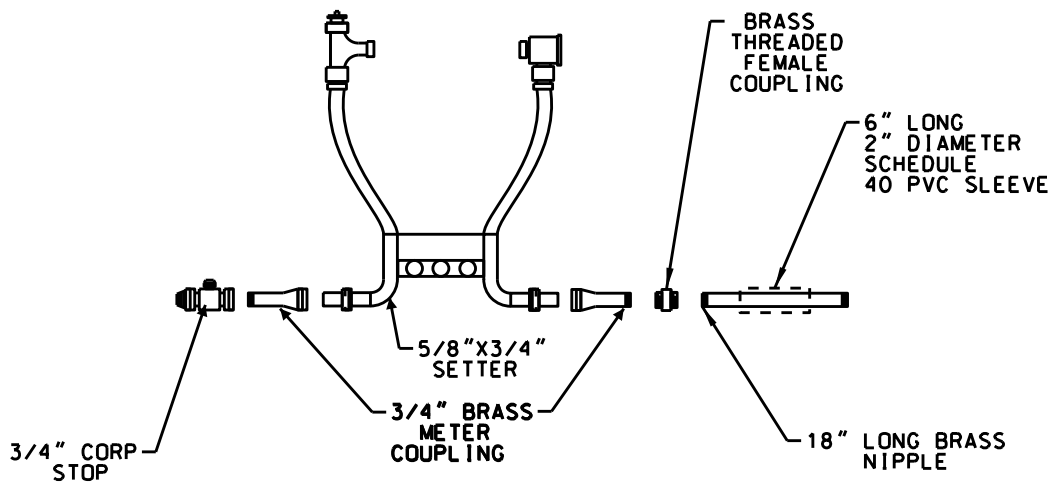
AERIAL VIEW



FRONT VIEW



FOUR(4) GANG 3/4" WATER METER VAULT (1 OF 2)



GENERAL NOTES:

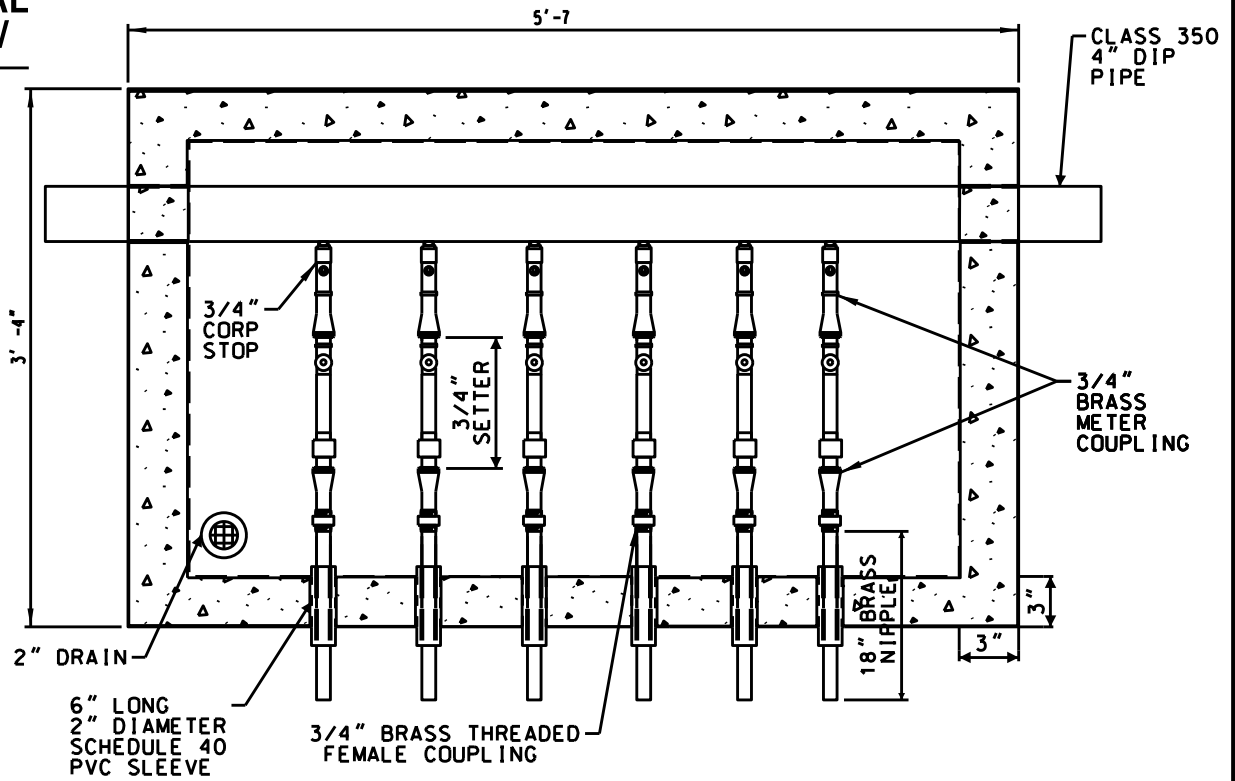
1. VAULT SHALL BE A HOLTON CONCRETE VAULT OR AN APPROVED EQUAL. ALL CONCRETE VAULT CONCRETE SHALL HAVE A MINIMUM OF 4,000-psi. STRENGTH AND CURED FOR 28-DAYS.
2. EACH VAULT SHALL HAVE A 2" DRAIN AT THE BASE OF THE VAULT.
3. VAULT HATCH SHALL BE FULL SIZE ALUMINUM LID HALLIDAY MODEL OR AN APPROVED EQUAL. THE HATCH SHALL HAVE 2" THICK WEATHER PROOF AND WATER RESISTANT INSULATION GLUED TO THE BOTTOM OF THE LID. THE GLUE AND/OR ADHESIVE SHALL BE WEATHER PROOF AND WATER RESISTANT.
4. AN ANTENNA HOLE IS TO BE CUT FOR EACH METERS' ITRON ENDPOINT.
5. THE WATER SERVICE MAIN SHALL BE 4" CLASS 350 DUCTILE IRON PIPE (DIP).
6. ALL WATER SERVICES ARE TO USE A DIRECT TAP INTO THE 4" CLASS 350 DUCTILE IRON PIPE (DIP).
7. CONCRETE VAULT TO MEET THE CURRENT REQUIREMENTS OF ASTM C857 AND C858 FOR STRUCTUAL DESIGN AND LOADINGS.
8. EACH WATER SERVICE SHALL HAVE AN 18" BRASS NIPPLE, WHICH IS SLEEVE THROUGH THE VAULTS WALL WITH A 6" LONG PIECE OF 2" PVC SCHEDULE 40 PIPE. THE SLEEVE IS TO BE GREAT FOAMED AT INSIDE AND OUTSIDE OF THE VAULT.
9. EACH WATER SERVICE ASSEMBLY SHALL BE HYDROSTATICLY PRESSURE TESTED AFTER BEING ASSEMBLED AT 150-psi. FOR ONE (1) HOUR. HYDROSTATIC PRESSURE SHALL BE CERTIFIED WITH CERTIFICATE OF COMPLETION.
10. ALL WATER SERVICE ASSEMBLIES SHALL BEGIN AT THE SECOND TO THE CLOSEST KNOCKOUT HOLE NEAR THE WALL WITHIN THE VAULT . THE WATER SERVICE ASSEMBLIES SHALL HAVE AN EVEN NUMBER OF ASSEMBLIES FROM THE CENTER OF THE CONCRETE VAULT.

PARTS LIST:

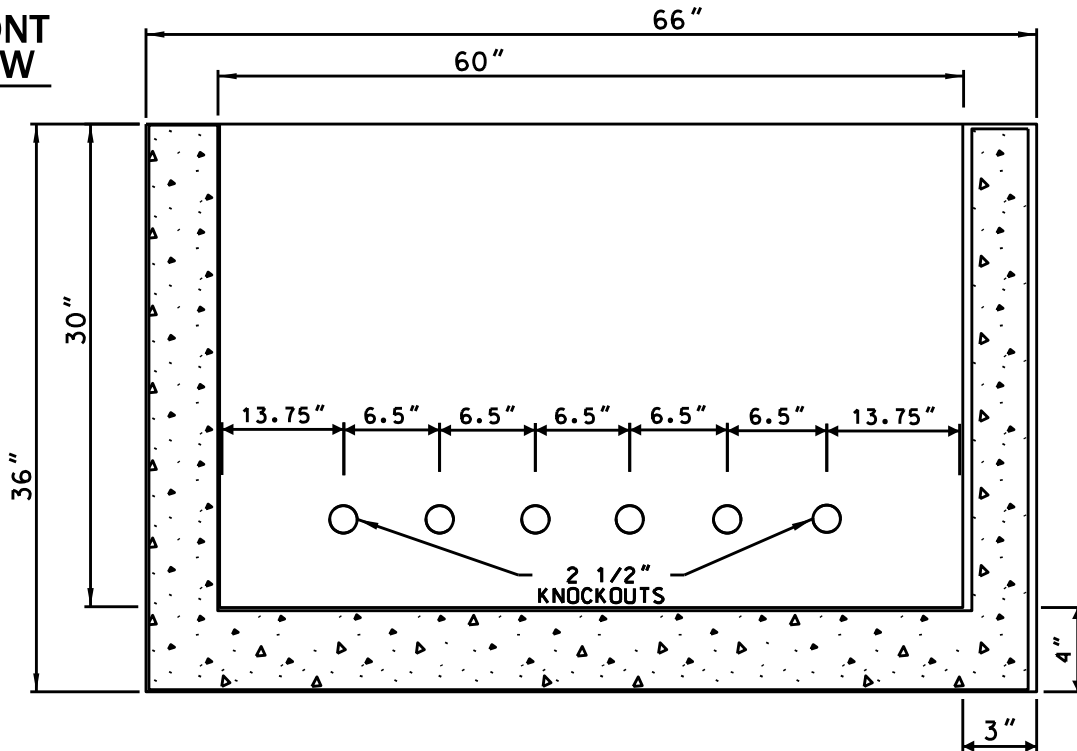
1. 5/8"x3/4"x7" WATER METER SETTER; FORD PART NO. VBHH42-7WR-NL OR MUELLER PART NO. 234B2418R5-N OR APPROVED EQUAL
2. 3/4" BRASS METER COUPLING; FORD PART NO. C38-23-2-5-NL OR APPROVED EQUAL.
3. 3/4" BRASS THREADED FEMALE COUPLING
4. 3/4" (18"LONG) BRASS NIPPLE
5. 3/4" CORPERATION TOP; FORD PART NO. FB-1600-3-NL OR APPROVED EQUAL.

FOUR(4) GANG 3/4" WATER METER VAULT (2 OF 2)

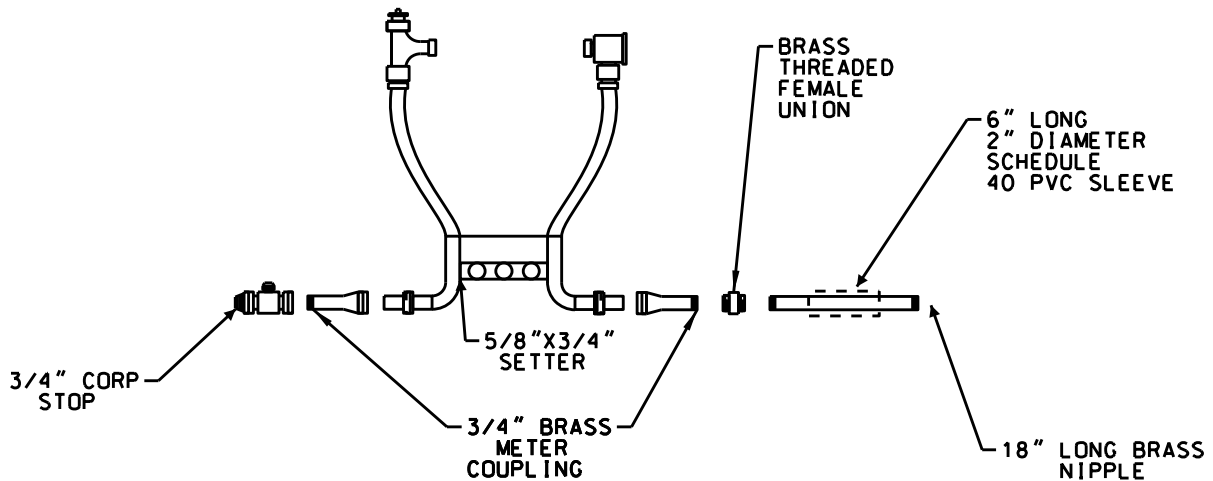
AERIAL VIEW



FRONT VIEW



SIX (6) GANG 3/4" WATER METER VAULT (1 OF 2)



GENERAL NOTES:

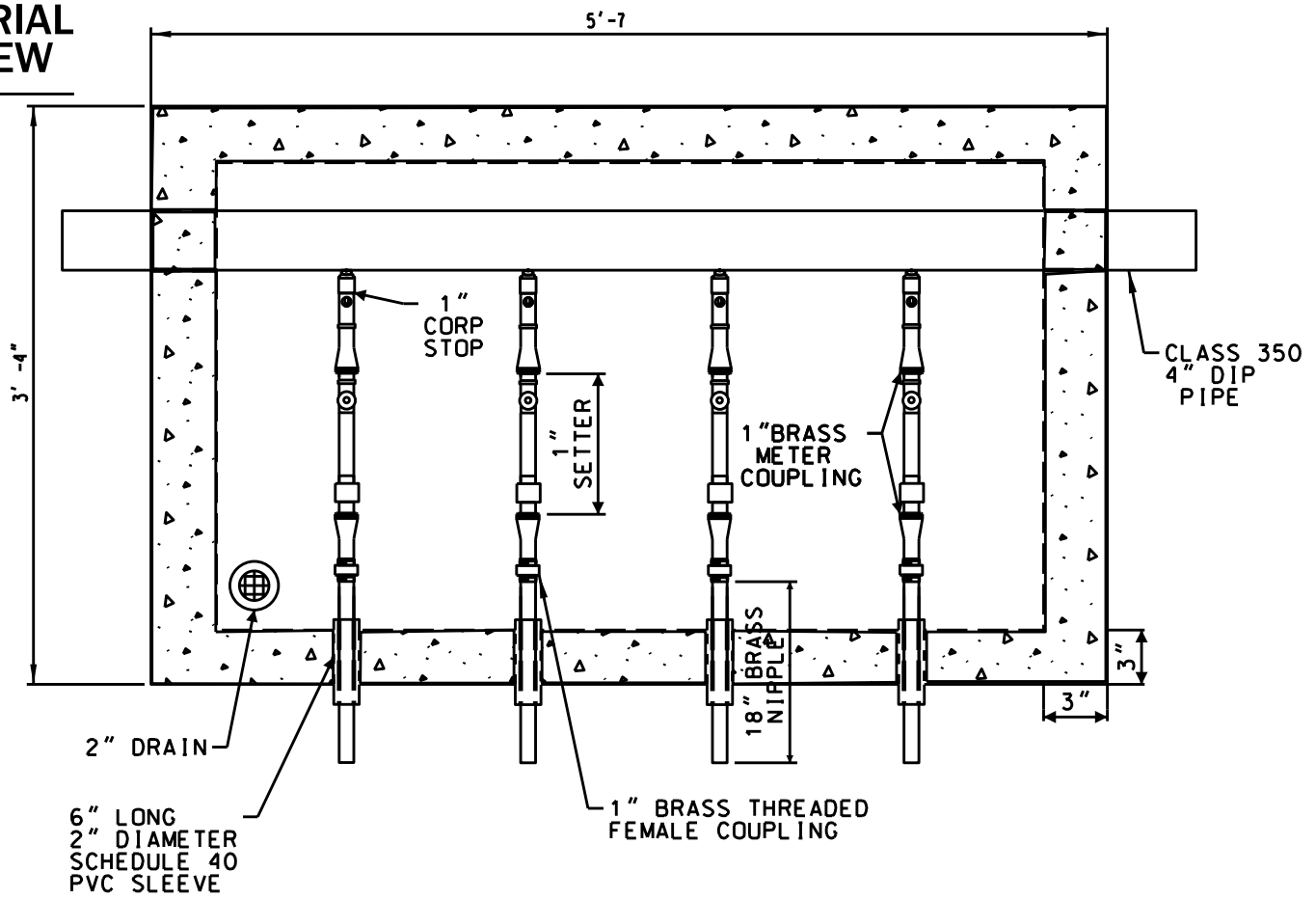
1. VAULT SHALL BE A HOLTON CONCRETE VAULT OR AN APPROVED EQUAL. ALL CONCRETE VAULT CONCRETE SHALL HAVE A MINIMUM OF 4,000-psi. STRENGTH AND CURED FOR 28-DAYS.
2. EACH VAULT SHALL HAVE A 2" DRAIN AT THE BASE OF THE VAULT.
3. VAULT HATCH SHALL BE FULL SIZE ALUMINUM LID HALLIDAY MODEL OR AN APPROVED EQUAL. THE HATCH SHALL HAVE 2" THICK WEATHER PROOF AND WATER RESISTANT INSULATION GLUED TO THE BOTTOM OF THE LID. THE GLUE AND/OR ADHESIVE SHALL BE WEATHER PROOF AND WATER RESISTANT.
4. AN ANTENNA HOLE IS TO BE CUT FOR EACH METERS' ITRON ENDPOINT.
5. THE WATER SERVICE MAIN SHALL BE 4" CLASS 350 DUCTILE IRON PIPE (DIP).
6. ALL WATER SERVICES ARE TO USE A DIRECT TAP INTO THE 4" CLASS 350 DUCTILE IRON PIPE (DIP).
7. CONCRETE VAULT TO MEET THE CURRENT REQUIREMENTS OF ASTM C857 AND C858 FOR STRUCTUAL DESIGN AND LOADINGS.
8. EACH WATER SERVICE SHALL HAVE AN 18" BRASS NIPPLE, WHICH IS SLEEVE THROUGH THE VAULTS WALL WITH A 6" LONG PIECE OF 2" PVC SCHEDULE 40 PIPE. THE SLEEVE IS TO BE GREAT FOAMED AT INSIDE AND OUTSIDE OF THE VAULT.
9. EACH WATER SERVICE ASSEMBLY SHALL BE HYDROSTATICLY PRESSURE TESTED AFTER BEING ASSEMBLED AT 150-psi. FOR ONE (1) HOUR. HYDROSTATIC PRESSURE SHALL BE CERTIFIED WITH CERTIFICATE OF COMPLETION.
10. ALL WATER SERVICE ASSEMBLIES SHALL BEGIN AT THE SECOND TO THE CLOSEST KNOCKOUT HOLE NEAR THE WALL WITHIN THE VAULT . THE WATER SERVICE ASSEMBLIES SHALL HAVE AN EVEN NUMBER OF ASSEMBLIES FROM THE CENTER OF THE CONCRETE VAULT.

PARTS LIST:

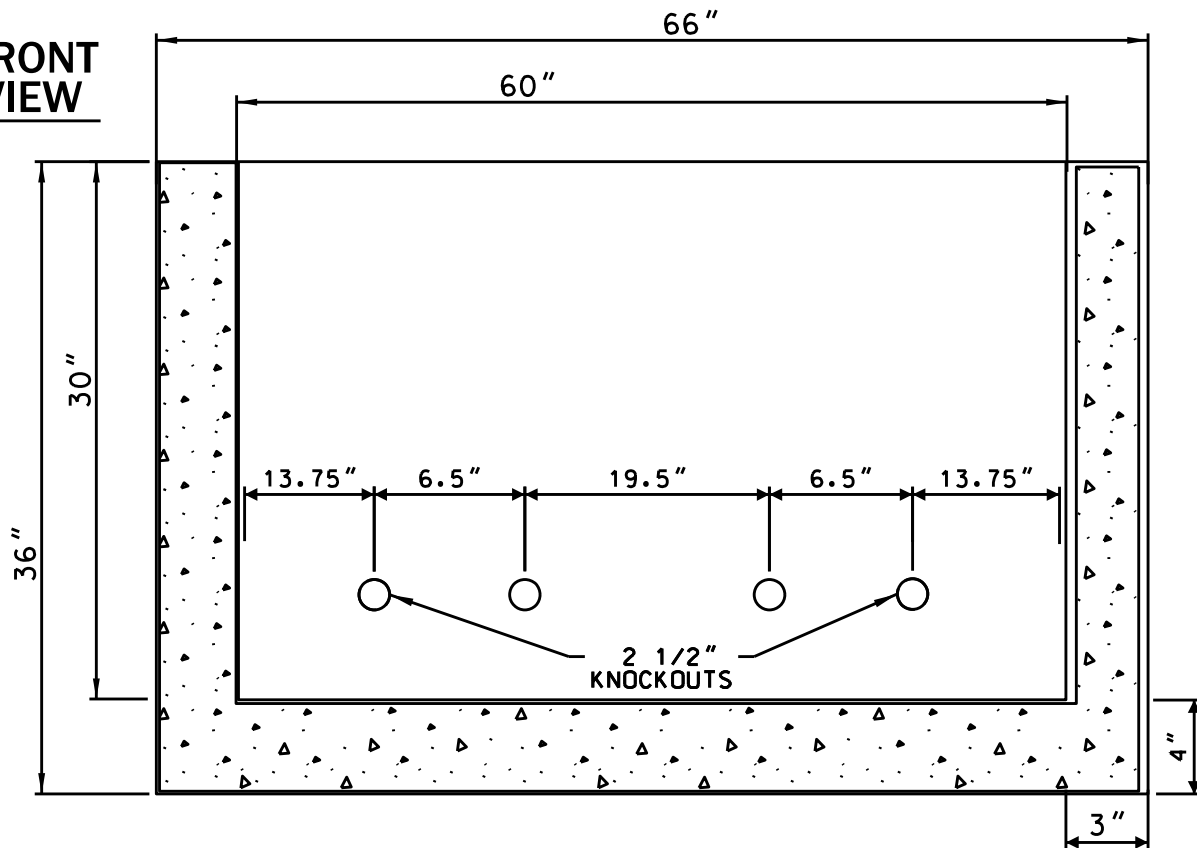
1. 5/8"x3/4"x7" WATER METER SETTER; FORD PART NO. VBHH42-7WR-NL OR MUELLER PART NO. 234B2418R5-N OR APPROVED EQUAL
2. 3/4" BRASS METER COUPLING; FORD PART NO. C38-23-2-5-NL OR APPROVED EQUAL.
3. 3/4" BRASS THREADED FEMALE COUPLING
4. 3/4" (18"LONG) BRASS NIPPLE
5. 3/4" CORPERATION TOP; FORD PART NO. FB-1600-3-NL OR APPROVED EQUAL.

SIX (6) GANG 3/4" WATER METER VAULT (2 OF 2)

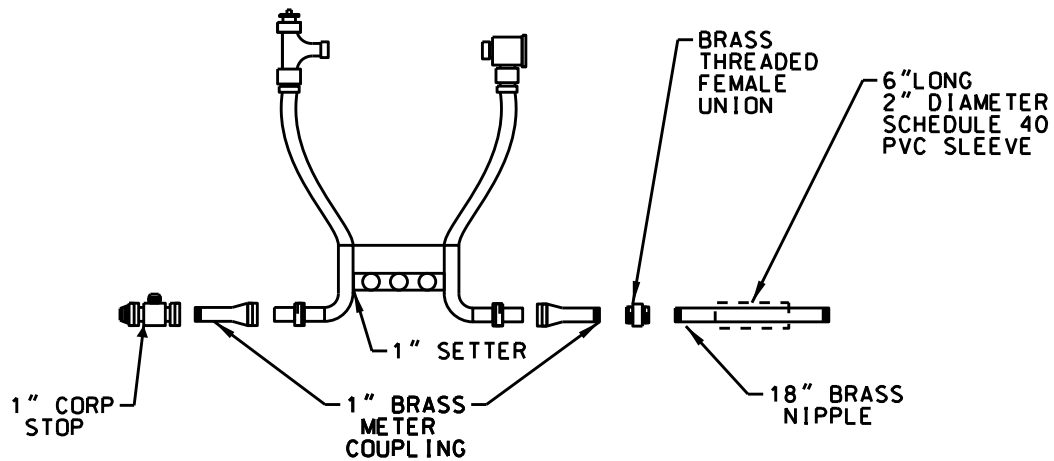
AERIAL VIEW



FRONT VIEW



FOUR (4) GANG 1" WATER METER VAULT (1 OF 2)



GENERAL NOTES:

1. VAULT SHALL BE A HOLTON CONCRETE VAULT OR AN APPROVED EQUAL. ALL CONCRETE VAULT CONCRETE SHALL HAVE A MINIMUM OF 4,000-psi. STRENGTH AND CURED FOR 28-DAYS.
2. EACH VAULT SHALL HAVE A 2" DRAIN AT THE BASE OF THE VAULT.
3. VAULT HATCH SHALL BE FULL SIZE ALUMINUM LID HALLIDAY MODEL OR AN APPROVED EQUAL. THE HATCH SHALL HAVE 2" THICK WEATHER PROOF AND WATER RESISTANT INSULATION GLUED TO THE BOTTOM OF THE LID. THE GLUE AND/OR ADHESIVE SHALL BE WEATHER PROOF AND WATER RESISTANT.
4. AN ANTENNA HOLE IS TO BE CUT FOR EACH METERS' ITRON ENDPOINT.
5. THE WATER SERVICE MAIN SHALL BE 4" CLASS 350 DUCTILE IRON PIPE (DIP).
6. ALL WATER SERVICES ARE TO USE A DIRECT TAP INTO THE 4" CLASS 350 DUCTILE IRON PIPE (DIP).
7. CONCRETE VAULT TO MEET THE CURRENT REQUIREMENTS OF ASTM C857 AND C858 FOR STRUCTUAL DESIGN AND LOADINGS.
8. EACH WATER SERVICE SHALL HAVE AN 18" BRASS NIPPLE, WHICH IS SLEEVE THROUGH THE VAULTS WALL WITH A 6" LONG PIECE OF 2" PVC SCHEDULE 40 PIPE. THE SLEEVE IS TO BE GREAT FOAMED AT INSIDE AND OUTSIDE OF THE VAULT.
9. EACH WATER SERVICE ASSEMBLY SHALL BE HYDROSTATICLY PRESSURE TESTED AFTER BEING ASSEMBLED AT 150-psi. FOR ONE (1) HOUR. HYDROSTATIC PRESSURE SHALL BE CERTIFIED WITH CERTIFICATE OF COMPLETION.
10. ALL WATER SERVICE ASSEMBLIES SHALL BEGIN AT THE SECOND TO THE CLOSEST KNOCKOUT HOLE NEAR THE WALL WITHIN THE VAULT. THE WATER SERVICE ASSEMBLIES SHALL HAVE AN EVEN NUMBER OF ASSEMBLIES FROM THE CENTER OF THE CONCRETE VAULT.

PARTS LIST:

1. 1" WATER METER SETTER; FORD PART NO. VBHH44-10-NL OR APPROVED EQUAL
2. 1" BRASS METER COUPLING; FORD PART NO. C38-44-2-625-NL OR APPROVED EQUAL.
3. 1" BRASS THREADED FEMALE COUPLING
4. 1" (18"LONG) BRASS NIPPLE
5. 1" CORPERATION TOP; FORD PART NO. FB1600-45-NL OR APPROVED EQUAL.

FOUR(4) GANG 1" WATER METER VAULT (2 OF 2)